

# Presentation Conseil Général du Val de Marne (France)

DACTIVE – Kick-off meeting – November 2010 – Florence (Italy)

# Presentation of Val-de-Marne

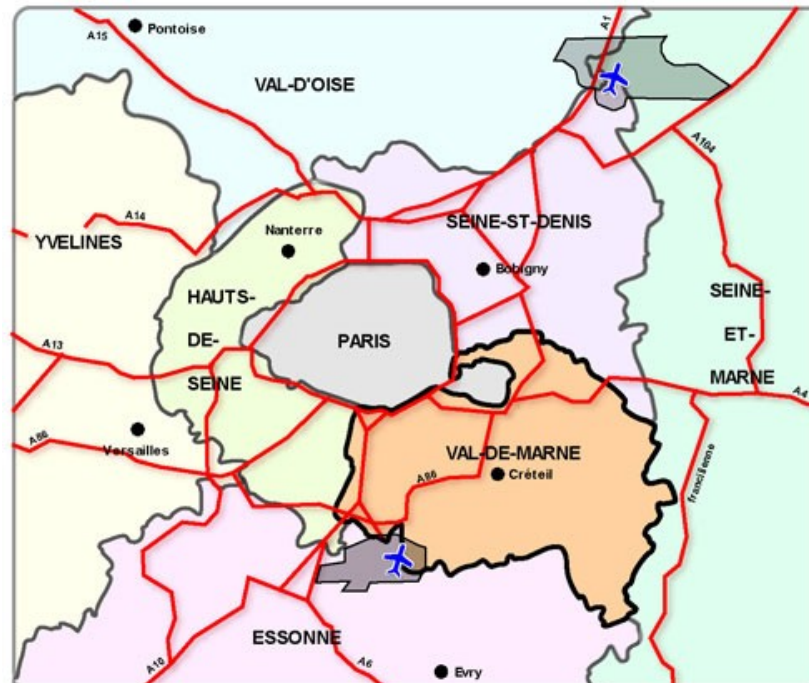
Geographical aspects

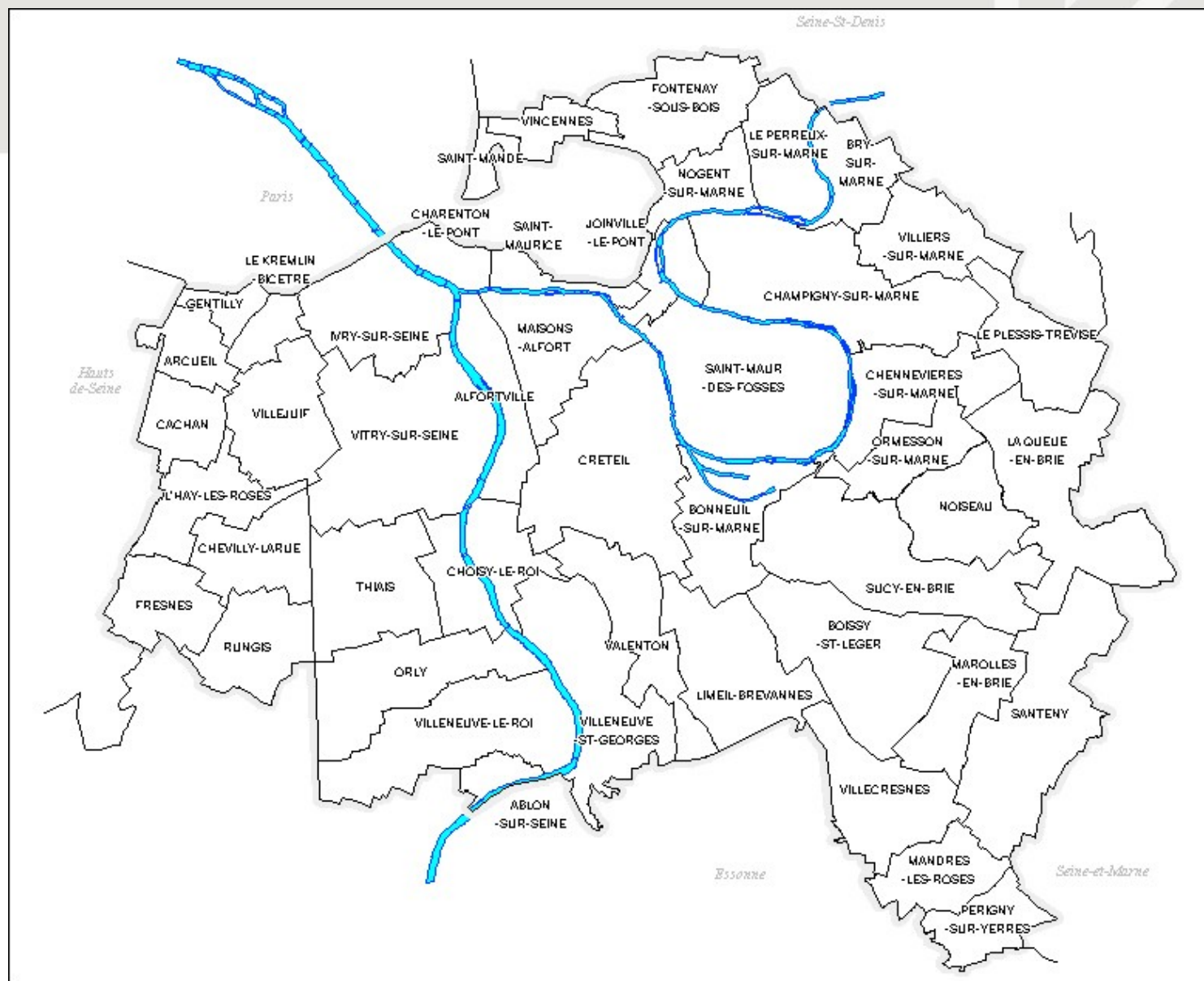
Economical aspects

Administrative aspects

# Geographical aspects

- Close East suburbs of the French capital
- Most densely populated areas in France
- A territory shaped by water





# Economical aspects

## **1. Advantages:**

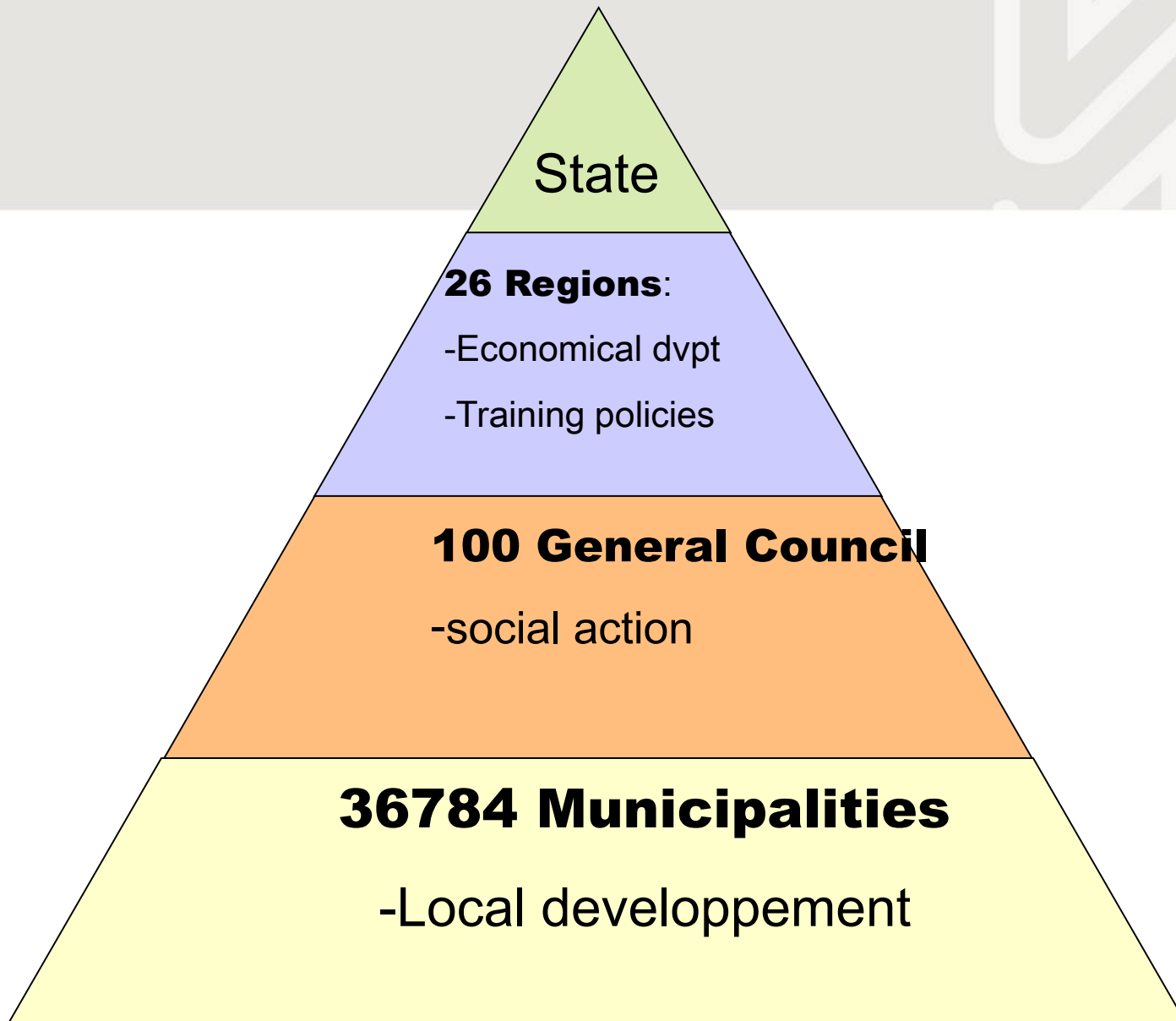
- developed infrastructures
- a high development of the service sector
- Level of unemployment

## **2. Disadvantages:**

- Territorial disparities
- Road's paralysis

# Administrative aspects

- Position within the French administrative architecture:
  - Region
  - **General Council**
  - Municipalities



# Administrative aspects

## Organisation of the institution

- Geographical organisation
- Prerogatives
- Budget

## Main areas :

- ✓ « Développement économique »
- ✓ « Architecture et environnement »
- ✓ « Education et Culture »
- ✓ « Enfance et famille »
- ✓ « **Prévention Action Sociale** »



# Activities linked to D-Active project

· Mode of support :

- Nature of answers
- Possible offers of structures and services
- Structures and services which are relevant from Conseil Général du Val-de-Marne

One example : SAVS and SAMSAH

Support or care ?

LIFE PROJECT Concerned the person herself

Equality, participation, citizenship

Law of the 11/02/2005

# Nature of answers

Six possible answers :

- Regular care
- Regular income
- Access and maintenance in housing
- Prevention of isolation and access to social activities
  - Activities or job
  - Legal protection

# Possible offers

Sanitaire : Secteur psychiatrique

Médico-social

- Accueil familial thérapeutique
- Appartements thérapeutiques, Foyers de post-cure
- Appartements associatifs de secteur

**-Structures temporaires :**  
Appartements de coordination thérapeutique,  
Lits halte soins- santé

**-Structures temps plein :**  
MAS

FAM, Foyer de vie, Accueil temporaire  
Foyer d'hébergement  
(maison de retraite)

Social

user

services

autres modalités

Social

services

**-Structures temporaires :**  
CHU, nuits d'hôtels, chrs  
**-Hébergement stable:**  
Maisons relais-résidence  
d'accueil

autres modalités

- Résidences sociales
- Familles gouvernantes
- Accueil familial social
- Appartements associatifs
- Logement social ou privé

SAVS et SAMSAH  
Service d'accompagnement  
À la vie sociale et médico-sociale  
-Groupe d'Entraide Mutuelle  
Equipes psy-précarité

# Structures and services relevant of Conseil Général du Val-de-Marne

- Foyer d'hébergement
- Foyer de vie\_
- Accueil temporaire
- Foyer d'accueil médicalisé ( FAM )\_
- Accueil familial social
- les SAVS et SAMSAH:  
les services d'accompagnement à la vie sociale et  
médico-sociale

**Foyer d'hébergement**: Structure proposing housing for disabled workers who work during the day

**Foyer de vie**: Structure welcoming disabled people who can't work but who have a relative autonomy on physical or intellectual level. It propose a full time support, during the year.

**Accueil temporaire**: stay housing to give the relatives a break or for an evaluation period.

**Foyer d'accueil médicalisé ou F.A.M.**: for disabled people who are totally or partly dependant and who need a medical and constant care.

**Accueil familial social**: support by individuals in their homes for disabled people who can't stay in their own home.

**Les services d'accompagnement à la vie sociale et médico-sociale : SAVS et SAMSAH** : benefits of services are given at home ; they aim a better autonomy of people, including if necessary a support to medical care.

# Structures and services relevant of Conseil Général du Val-de-Marne, devoted to support for people in situation of psychic disability

**Premier chiffre :** nombre total de structures

**Deuxième chiffre:** nombre de structures orientées pour l'accompagnement

**Foyer d'hébergement** 17 / 5

**Foyer de vie** 16 / 6

**Foyer d'accueil médicalisé** 5 / 4

**SAVS** 12 / 6

**SAMSAH** 3 / 3

# Les Services d'Accompagnement à la Vie sociale et Médico-Sociale.

## General Considerations -

Aim

Structures in development

Diversification of the offer :

New needs

New publics

Service linked with a residential project

Other services at home

Psychiatric sector